

The Micron



The staff newsletter of AJ Engineering and NEWCo

AJE HELPS GARDEN CENTRE GROW

AJ Engineering is helping its neighbour, Mackenzie & Cruickshank Garden Centre grow with a new extension.

AJE is working with other local firms to support M&C with its new £750,000 development due to start in January.

Project manager Allan Martin said: "This is the second time that AJE has been involved in an extension at M&C which is located just around the corner from our HQ on the Greshop Industrial Estate.

"We are fabricating and erecting approx. 7 tonnes of steel to extend the building into the existing courtyard at the current main entrance. There will be a fantastic new glazed entrance and we will be putting new cladding on the roof of the new building and the existing building including the installation of new opening roof vents."

Allan added: "The side walls of the existing building are currently glazed and will be reclad with composite sheeting and a cement board partial rain screen to create an architectural feature."

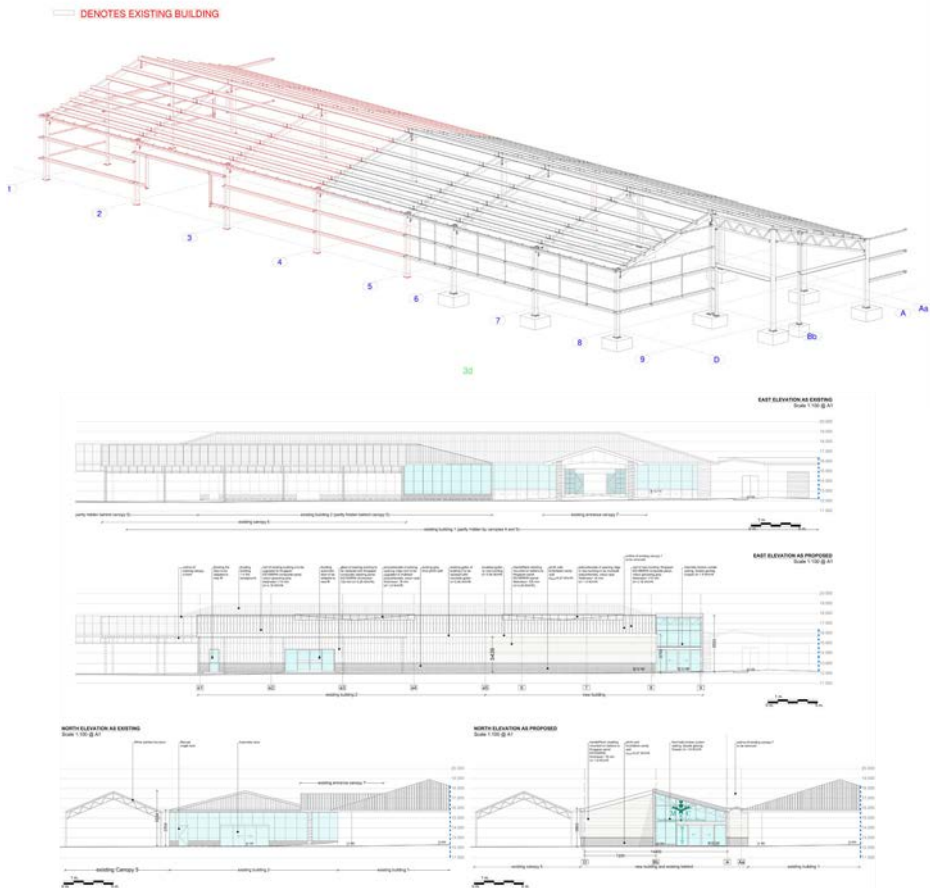
The 500sqm extension will boast solar panels, air source heat pump and under floor heating. The reason for the development is so that M&C, a family run business can increase retail space to offer more gardening and outdoor living products.

Allan said: "Peter and Ali Wilson from M&C are the customers and they have had several coordination meetings with ourselves and the other suppliers to ensure the project goes smoothly. Works are due to start on January 4 and it is intended that the project is complete by the end of March for the key garden retail season to begin."

AJE was involved in the last major development at M&C in 2017 when the company's expanded with a half a million-pound glass house extension.



From right: AJE's Allan Martin with Peter and Ali Wilson, Matthew Milne engineering manager at AES Solar and Miguel Gomez, director at McDonald & Munro



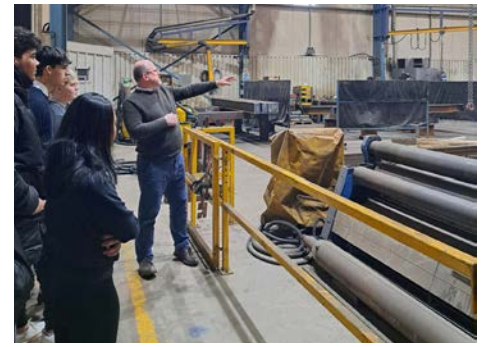
AJ GUYS LIGHT UP HIGH STREET

A number of AJE staff gave up their time recently to help erect the Forres Christmas Lights.

Twenty volunteers descended on the High Street to ensure the lights were put up safely in time for the big switch on which will take place on December 3rd at 5pm.



Volunteers were out in force to erect the town's Christmas lights



PUPILS INSIGHT INTO AJE

Pupils from Forres Academy were given an insight to what it's like to work at AJE

Director and general manager Graham, recently supported a group of S4 and S5 pupils from Forres Academy on a workplace tour.

The pupils were shown around the workshops and offices at the Greshop HQ including the CNC shop.

The visit was facilitated by DYW Moray which is set up to create stronger links between businesses and education and provide more opportunities for young people to be better prepared for the world of work. Nationally, Developing the Young Workforce is a government funded project made up of 21 regional groups across Scotland.

Graham said: "AJ Engineering is happy to facilitate workplace visits and engage with our local school. Ever since the company was set up our ethos has been about encouraging young people into the workplace and we have a successful apprenticeship scheme which supports that."

A spokesperson for DYW Moray said: "Thank you to Graham for supporting a workplace tour. It gave the pupils a great insight into the engineering industry and the careers they could follow. It was even better to hear from some past Forres Academy pupils."

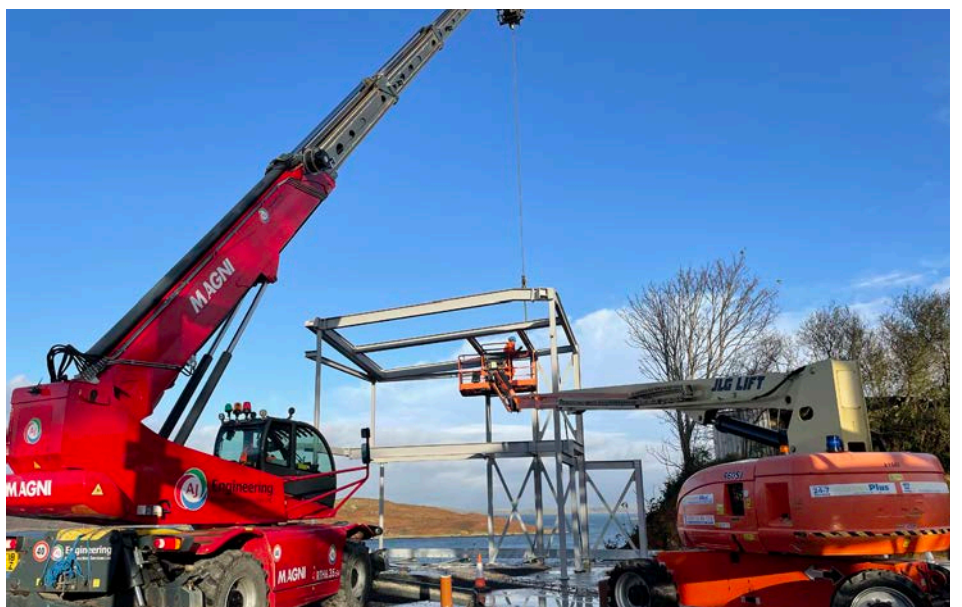
HOUSE BUILD 'ROCKS'

Steelworks for a bespoke residential home, spanning three levels have been supplied and erected by an AJE team.

Approximately 80 tonnes of steelworks have been put into place for the private house which is nestled into the cliffside taking advantage of the views looking out onto the Atlantic Ocean from Craobh Haven, in Argyll and Bute.

Project manager Allan Martin said: "Due to the nature of this home being built into the cliff, it was challenging with very complex connections. However, the precision and skill of our drawing, fabrication and erection team led by experienced erector George Wood meant that everyone coped extremely well to ensure there was a successful install. Use of the company's own Magni Roto crane proved invaluable on this exciting project."

Allan added: "It was a pleasure to work for Ian Miles Contracting and we have formed a good relationship. We wish him the greatest success with the next phases of the job which will turn our steel structure into a beautiful home."



Top right: The steel framework for a bespoke home

Right: Use of the Magni crane was invaluable on the bespoke home project